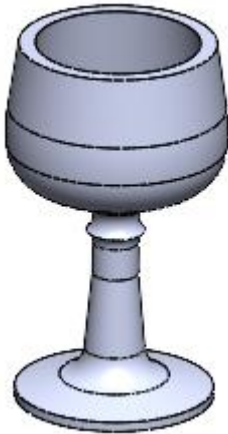
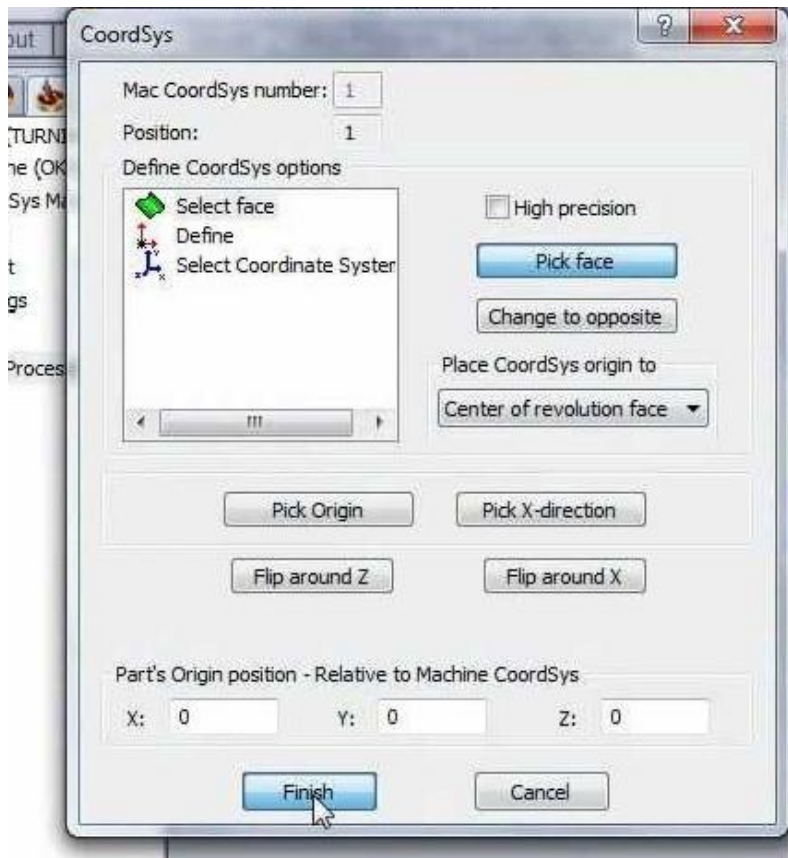


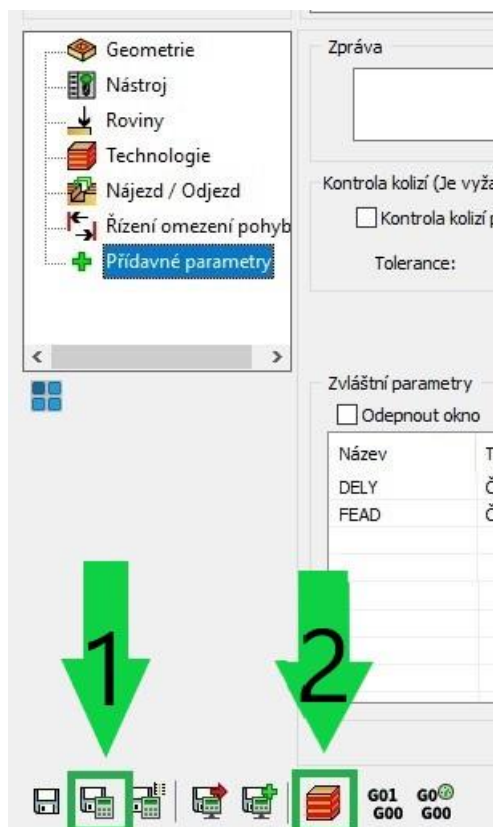
## Goblet – program CAM



1. Select the 1st operation (TURNING) - New shape geometry



2. Select tool movement geometry
3. Determine the tool (type and its cutting conditions)
4. Determine the planes  
Chip removal technology
5. Raid and departure of the tool
6. Save and recalculate the operation (1) and test machine simulation (2)



7. 3D simulation - video preview
8. Recalculation of all operations and program generation



9. Save - The part is done