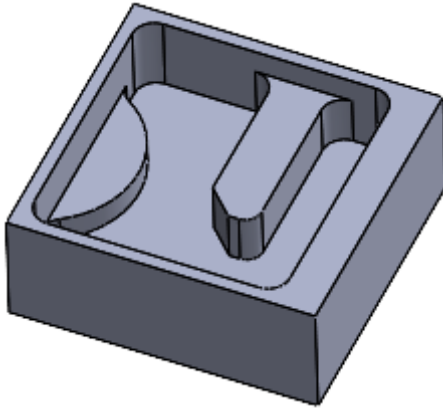
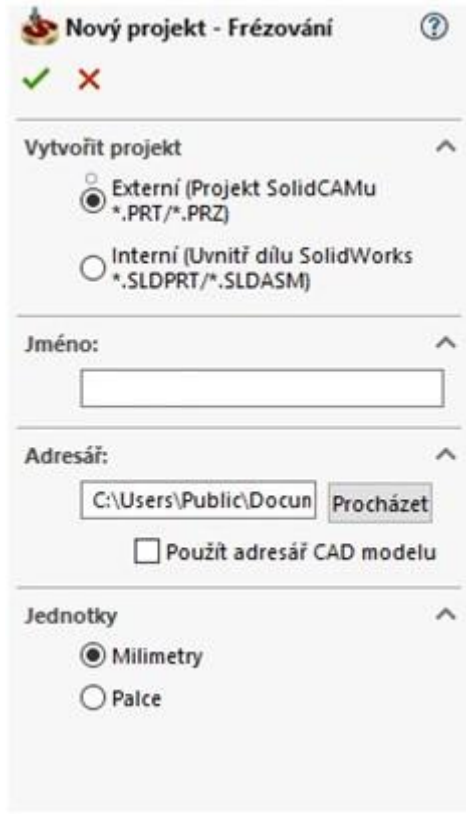


Bowl - program CAM

1. Open SolidCAM project - New (Milling)



1. Create a project and select units of measurement



Nový projekt - Frézování

Vytvořit projekt

Externí (Projekt SolidCAMu
.PRT/.PRZ)

Interní (Uvnitř dílu SolidWorks
.SLDPRT/.SLDASM)

Jméno:

Adresář:

C:\Users\Public\Docum Procházet

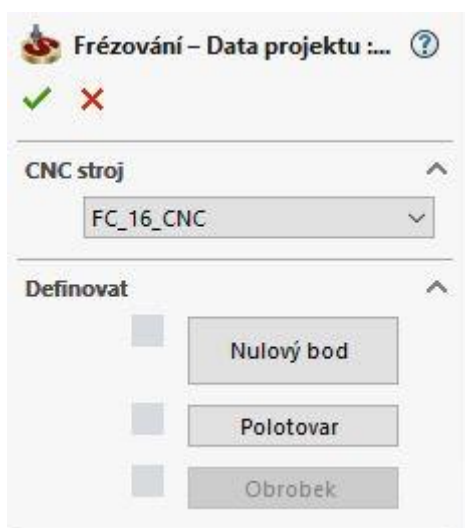
Použít adresář CAD modelu

Jednotky

Milimetry

Palce

2. Identify important project dates



Frézování – Data projektu ...

CNC stroj
FC_16_CNC

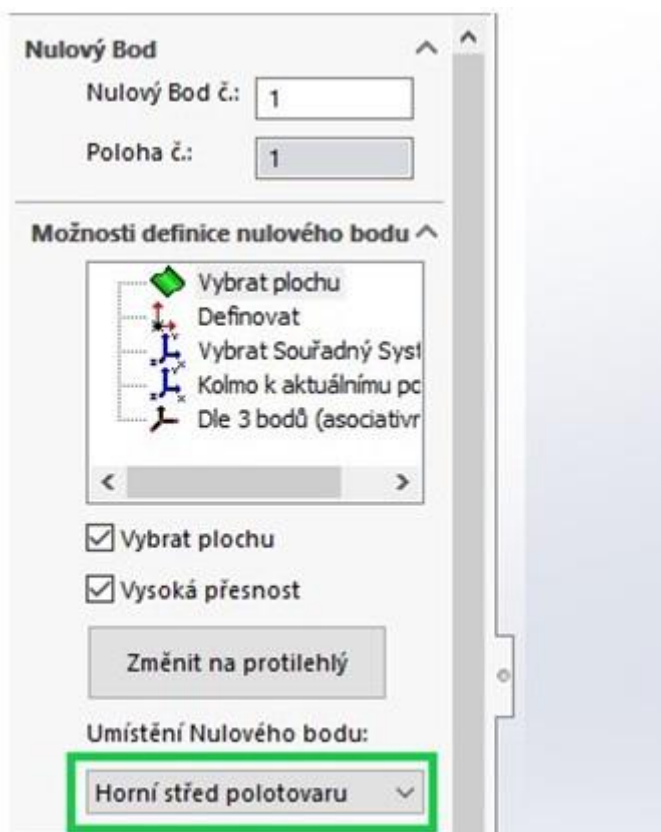
Definovat

Nulový bod

Polotovár

Obrobek

3. Location of the Zero Point



Nulový Bod

Nulový Bod č.: 1

Poloha č.: 1

Možnosti definice nulového bodu

Vybrat plochu
Definovat
Vybrat Souřadný Syst
Kolmo k aktuálnímu pc
Dle 3 bodů (asociativr



Vybrat plochu

Vysoká přesnost


Změnit na protilehlý

Umístění Nulového bodu:
Horní střed polotovaru


4. Semi-finished product additions

 **Polotovar** 


✓ ✗

Jméno: 


Definováno pomocí





Vysoká přesnost
(polygonizace)

Režim 

Vzhledem k modelu
 Absolutní souřadnice
 Velikost polotovaru

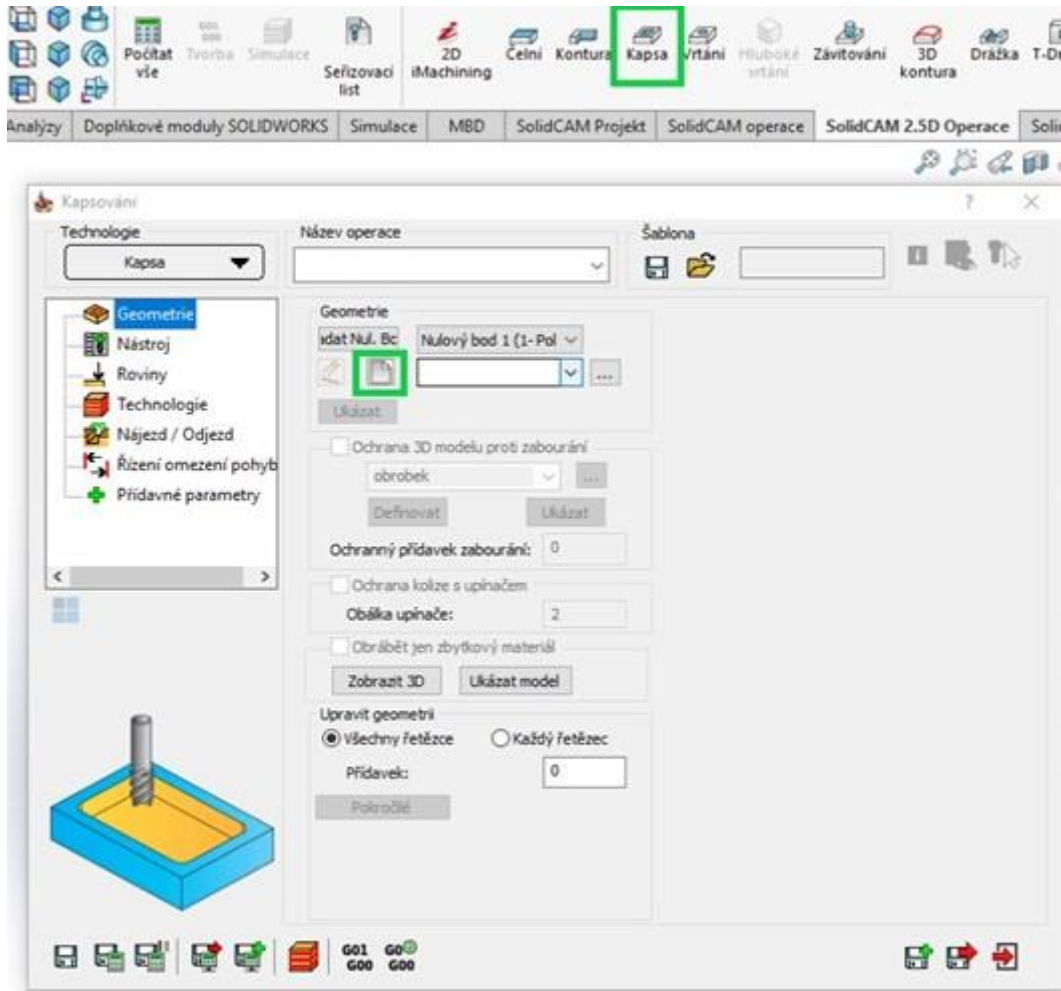
Výběr 

 Solid 1

Zvětšit kvádr o rozměr: 

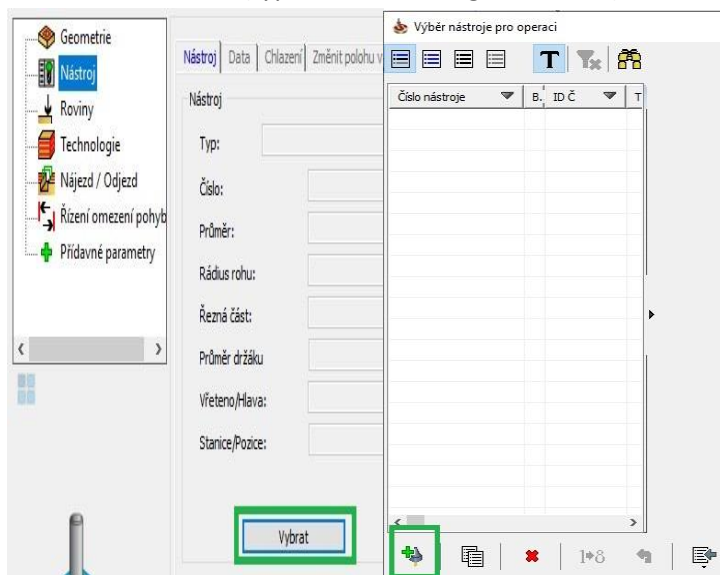
| | |
|------|--------------------------------|
| X+ : | <input type="text" value="0"/> |
| X- : | <input type="text" value="0"/> |
| Y+ : | <input type="text" value="0"/> |
| Y- : | <input type="text" value="0"/> |
| Z+ : | <input type="text" value="0"/> |
| Z- : | <input type="text" value="0"/> |

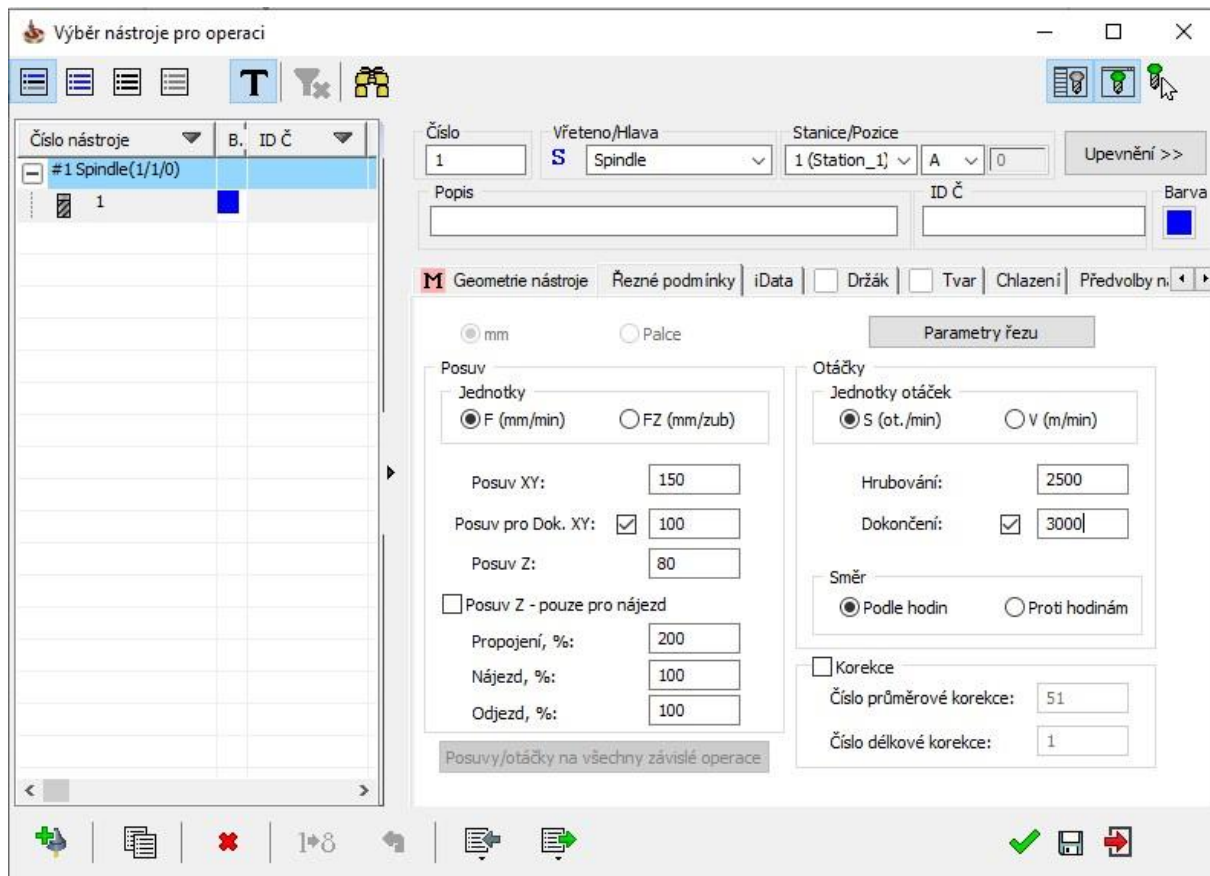
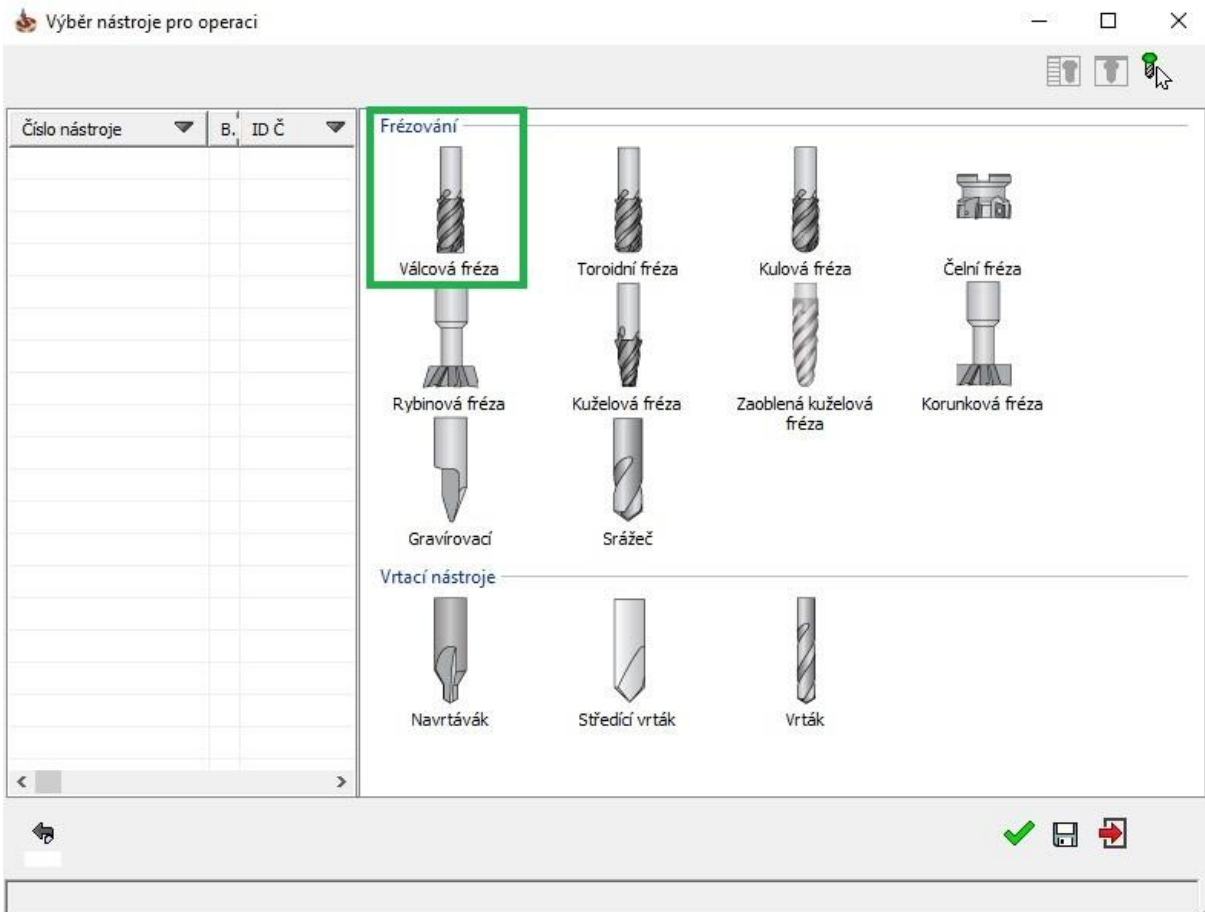
5. Select the 1st operation (POCKETING) - New shape geometry



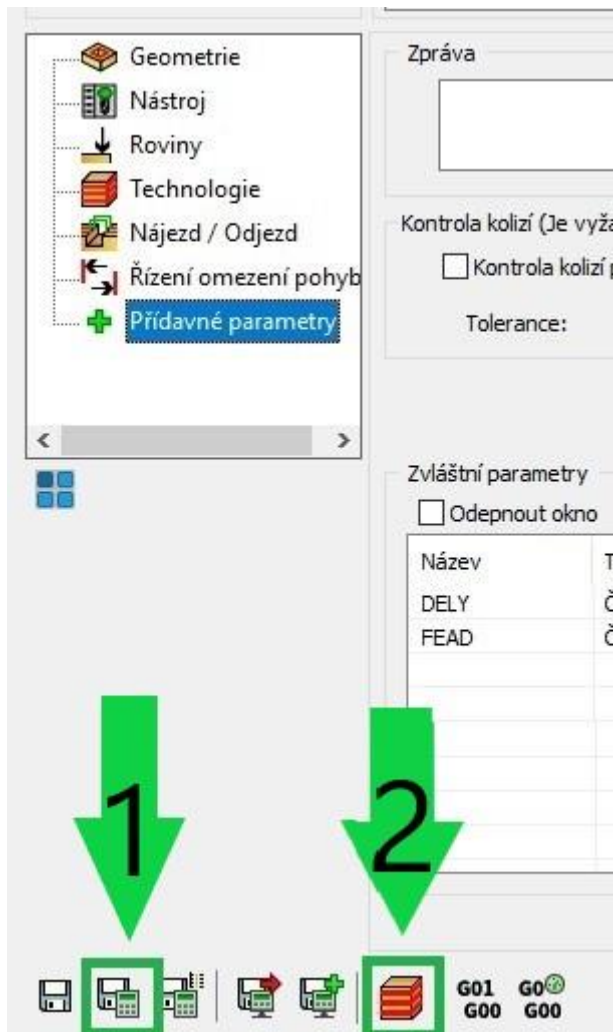
6. Select the geometry of the tool movement (through the "loop")

7. Determine the tool (type and its cutting conditions)





8. Determine planes (upper Z plane and pocket depth)
9. Motion technology
10. Raid and departure of the tool
11. Saving and recalculating the operation (1) and testing of machine simulation (2)



12. 3D simulation - video preview
13. Recalculation of all operations and program generation



14. Save - The part is done

