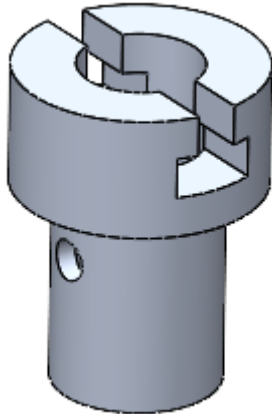
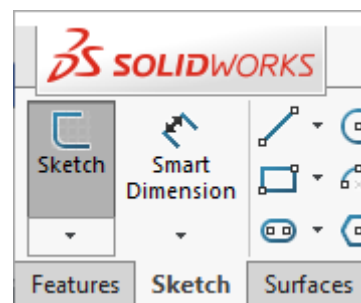
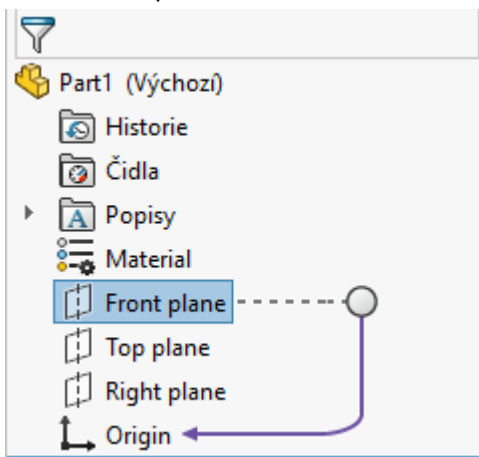


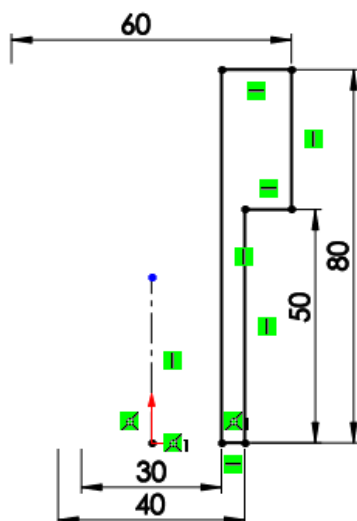
## Housing



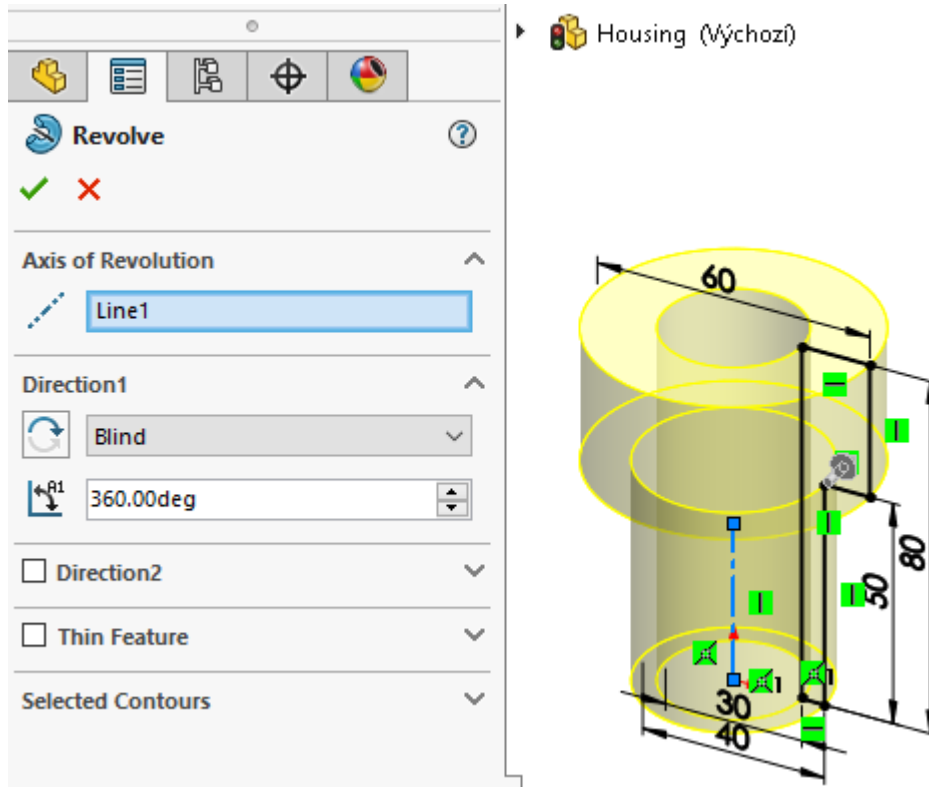
1. Open New File – Part.
2. Select Front plane and Sketch.



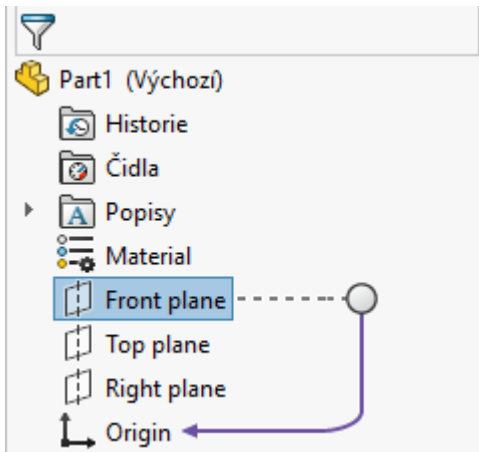
3. Draw the contour edges and the axis. Assign bindings and create dimensions.



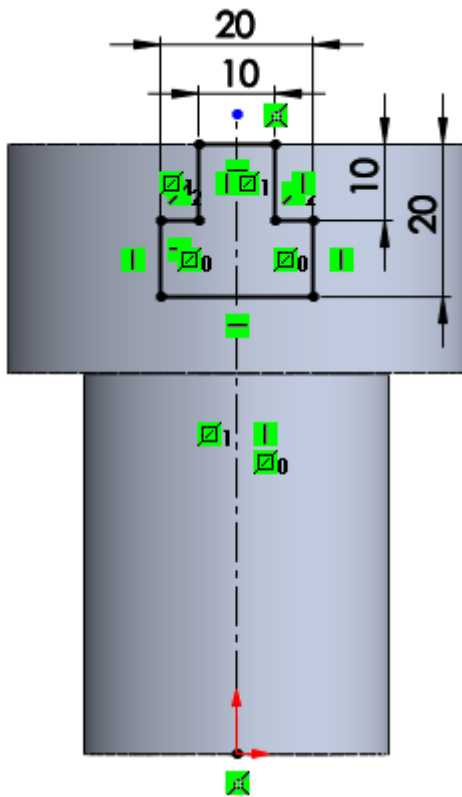
4. Add 360 ° rotations.



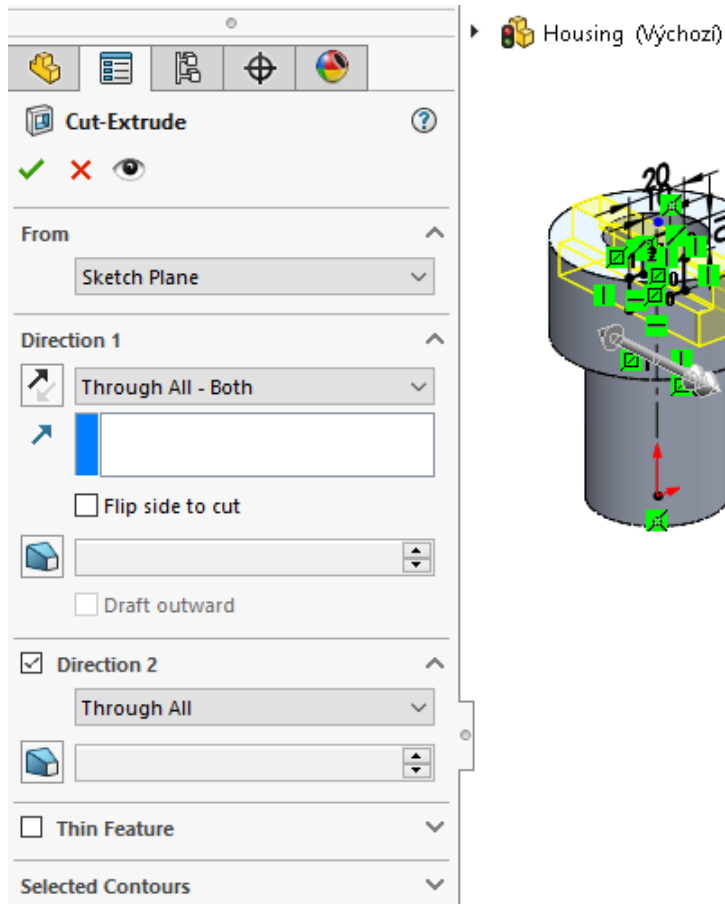
5. Select the Front plane and place a new sketch on it.



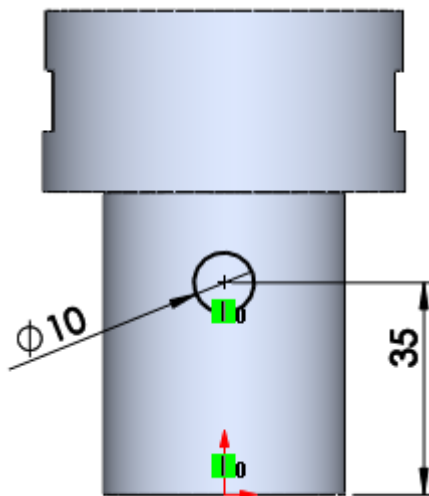
6. Draw the contour edges and the axis. Assign bindings and create dimensions.



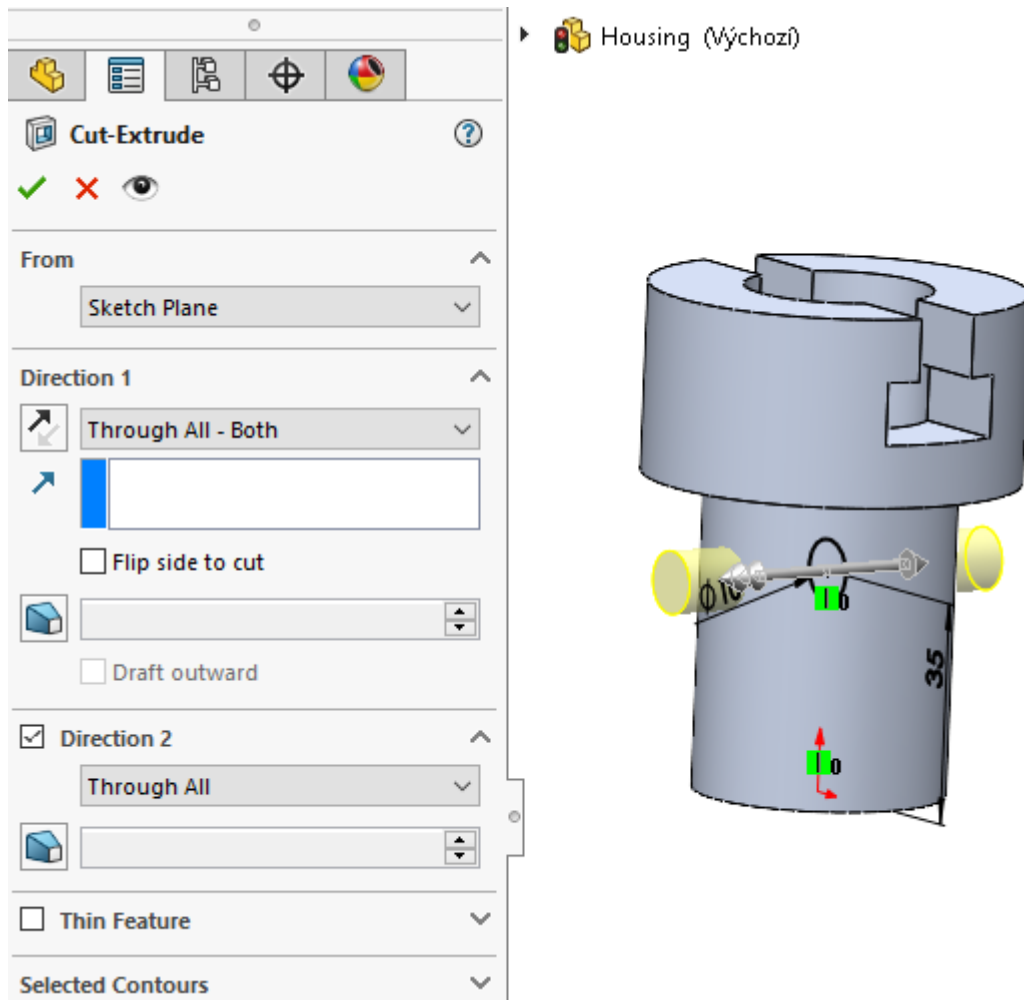
7. Remove by extruding it through all in both directions.



8. Select the right plane and place a new sketch on it. Draw a circle. Assign bindings and create dimensions.



9. Remove by extruding it through all in both directions.



10. Save - The part is done.

